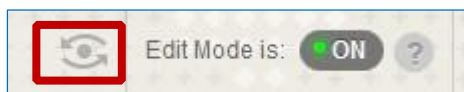
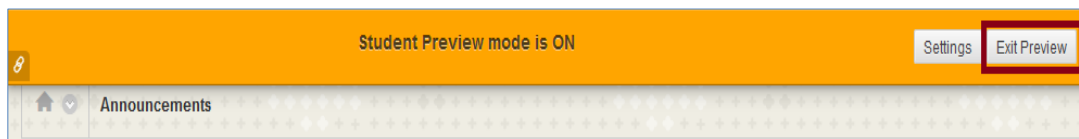


Student Preview mode allows you to view and interact with your course exactly as a student would. Once you enter student preview, a fake/test student account is created. This account has the same permissions and Blackboard access as an actual student. You can access and complete assignments just as your student do. These interactions can also be set to appear in your Grade Center, so you can grade and assign feedback to your test user just as you would with an enrolled student.

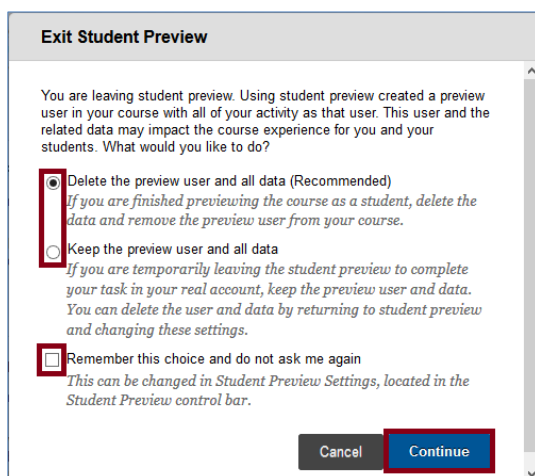
- To launch Student Preview simply click on the icon in the upper right of your course



- When you are done with the Student Preview, click on "Exit Preview" on the alert banner.



- A pop-up window will appear. You will have the options to delete your test student or leave them enrolled for future testing. Selecting the bottom checkbox will save your preference for the next time you use this tool. If you leave the box unchecked, the popup will ask for your preference each time the tool is used in your course.



To change a saved preference simply launch student preview and click on "Settings".

If you take a test or submit an assignment as a student, and you leave the preview user in the course, you can then grade the work and re-enter as the student to review grades and feedback.

This is often helpful to troubleshoot issues or simply to get a clearer picture of how a student experiences your course.